

Exploration Update: April 2012

About Norton

Norton Gold Fields Limited (ASX: NGF) is an established mid-tier, unhedged gold producer.

In FY2011, Norton produced approximately 152,000 ounces of gold from its open cut and underground operations at Paddington, near Kalgoorlie in Western Australia.

The company holds extensive granted mining and exploration leases in the pre-eminent Kalgoorlie goldfields, with a tenement package of 693km². The Paddington Operations have a current Mineral Resource of 6.0Moz, of which some 1.0Moz is classified as Reserves, for a mine life in excess of ten years.

Norton's growth will come from optimising existing operations and acquiring and developing resources.

For more information, please visit our website.

www.nortongoldfields.com.au

Norton Gold Fields (ASX: NGF)

ACN: 112 287 797
79 Hope Street
South Brisbane Queensland 4101
Australia
Phone +61(0) 7 3846 9200
Fax +61(0) 7 3255 0344

Tim Prowse
Non-Executive Chairman

André Labuschagne
Managing Director

HIGHLIGHTS

- Exploration expenditure of \$3.7M for quarter with over 26,000m of RC and diamond drilling completed
- Mineralisation at Homestead extends below current mine workings (VN01). Recent down-dip results include:
 - 4.9m @ 26.6g/t Au from 148m
 - 5.1m @ 19.0g/t Au from 153.6m
- Positive results from resource definition and/or extension drilling programs at Enterprise, Janet Ivy and Rose West - Violet including:
 - Enterprise**
 - 45m @ 1.60g/t Au from 106m
 - 29m @ 1.49g/t Au from 109m
 - 5m @ 6.99g/t Au from 17m
 - Janet Ivy**
 - 18m @ 2.73g/t Au from 47m
 - 11m @ 2.37g/t Au from 42m
 - Rose West - Violet**
 - 15m @ 3.54g/t Au from 28m
 - 8m @ 4.48g/t Au from 29m
 - 7m @ 4.14g/t Au from 27m
- Encouraging results from early stage targets include:
 - Racetrack West Prospect - 5m @ 7.40g/t Au from 79m & 11m @ 2.84g/t Au from 25m
 - Mulgarrie North Prospect - 2m @ 19.6g/t Au from 102m

Exploration Update: April 2012

Exploration & Resource Development

Exploration & Resource Development

Norton Gold Fields (ASX:NGF), the mid-tier Australian gold producer, is pleased to provide an update on the company's exploration and resources development program.

The Paddington tenement package covers an area of 693 square kilometres in one of the most highly endowed gold provinces globally. In January 2012, the company commenced a two year \$37M accelerated program of resource development and exploration targeting conversion of 700,000oz in resource to reserve, and identification of 300,000oz in new resources after annual mining depletion.

The resource development drilling strategy will target timely development of projects for the next five years as highlighted in a recent company presentation. Greenfields exploration targets will also be developed to identify the next generation of deposits.

Key target areas for resource development include underground resource evaluation programs at Homestead and Black Flag, delineation of oxide and deep primary resource extensions at Enterprise, resource extension at Janet Ivy and delineation of small open cut mining projects at Mount Pleasant, including Rose West – Violet, Green Gum and Golden Flag.

Initial greenfields exploration work will focus on the Border-Gidji Project area which overlies strike extensions of the highly prospective Boulder-Lefroy mineralised structural corridor.

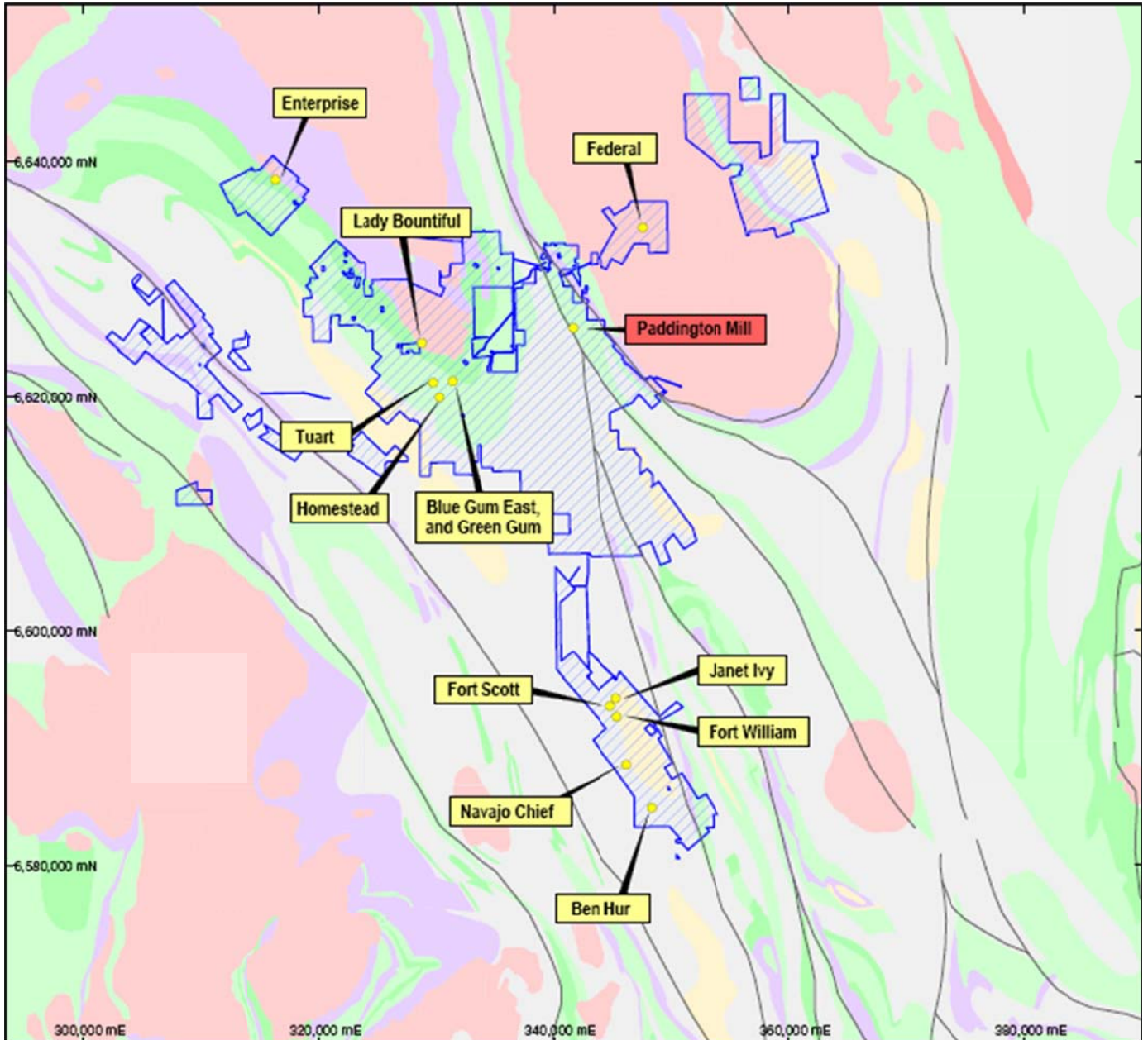
With full mining and processing capabilities, Norton is able to turn these exploration projects into producing mines within a relatively short period and benefit through increased gold production and an enhanced life of mine plan.

During the quarter, drilling programs comprised a total of 26,495m in 243 drill holes. Underground diamond drilling programs at Homestead generated 8,521m of core in 44 drill holes. Reverse circulation (RC) and surface diamond drilling comprised an additional 17,974m of drilling in 199 drill holes. Resource infill and extension programs were focussed at Enterprise, Janet Ivy and Rose West - Violet, with smaller programs targeting regional tenements elsewhere.

Exploration and resource development expenditure for the quarter was \$3.7M. Drilling programs are summarised in Table 1 on page 4.

Exploration Update: April 2012

Figure 1: Paddington tenement package



Exploration Update: April 2012

Table 1: Summary of Exploration and Resource Development Work Programs

Project	Activity	Project description
Mount Pleasant Project - Homestead Underground (VN01 down-dip, VN01 South & Black Flag Prospects)	44 diamond core drill holes for 8,521m	Resource extension evaluation on VN01 down-dip drilling, and evaluation of mineralisation at VN01 South and Black Flag
Mount Pleasant Project - Open Cut Prospects (Rose West - Violet, Racetrack West and Lady Bountiful Extended)	122 RC drill holes for 5,787m	Infill resource definition at Rose West - Violet and evaluation of other resource targets
Ora Banda Project - Enterprise Oxide	22 RC drill holes for 2,998m	Infill resource definition of oxide mineralisation in sub-vertical lodes and in up-dip extensions of main lode
Ora Banda Project - Enterprise Deeps	9 RC pre-collars and 2 diamond tails for 2,690m	Resource extension of west-plunging main lode mineralisation
Binduli Project- Janet Ivy Prospect	30 RC drill holes for 4,227m	Infill and resource extension drilling at depth and along strike
Golden Cities Project - Federal Prospect	5 RC drill holes for 1,194m	Infill resource evaluation drilling
Regional Projects (Breakaway Dam, Golden Eagle Prospects)	11 RC drill holes for 1,078m	Evaluation of mineralisation potential
Total	243 drill holes for 26,495m	

Exploration Update: April 2012

Homestead Underground, Mount Pleasant Project

Combined underground resource development and grade control programs have recorded an advance of 8,521m in 44 drill holes. The programs have targeted areas adjacent to the currently defined VN01 (the main mineralised vein at Homestead), including VN01 down-dip extensions, VN01 South extensions (up and down-dip positions), and the Black Flag Prospect.

Significant results to date from the programs include:

VN01 Down-dip:

HUD312	1.10m @ 11.10g/t Au from 158.4m
HUD313	1.35m @ 22.3g/t Au from 153.15m
HUD314	5.65m @ 8.57g/t Au from 146.8m
HUD324	0.53m @ 20.4g/t Au from 185.57m
HUD325	1.00m @ 24.8g/t Au from 222m
HUD333	4.90m @ 26.6g/t Au from 148m
HUD334	1.80m @ 11.8g/t Au from 164.2m
HUD335	1.30m @ 43.5g/t Au from 148.2m
HUD539	5.10m @ 19.0g/t Au from 153.6m
HUD552	5.30m @ 8.45g/t Au from 165.55m

VN01 South:

HUD488	1.84m @ 15.1g/t Au from 93.09m
HUD547	1.00m @ 40.7g/t Au from 203m
HUD553	0.70m @ 31.6g/t Au from 166m
	0.38m @ 61.2g/t Au from 186.7m
HUD585	0.40m @ 104g/t Au from 160.45m
HUD587	1.00m @ 10.5g/t Au from 162m
HUD589	1.00m @ 11.6g/t Au from 151m

Black Flag:

BUD001	0.30m @ 75.0 g/t Au from 251.1m
BUD004	0.70m @ 5.27g/t Au from 240.5m

All results from the programs are listed in Tables 2 to 4. Some of the results above are from cross-cutting mineralised veins situated adjacent to the main Homestead Shear Zone.

The VN01 down-dip drilling continues to extend mineralisation at depth (Figure 2). Resources and Reserves remain constrained only by lack of drilling below current deepest levels of development.

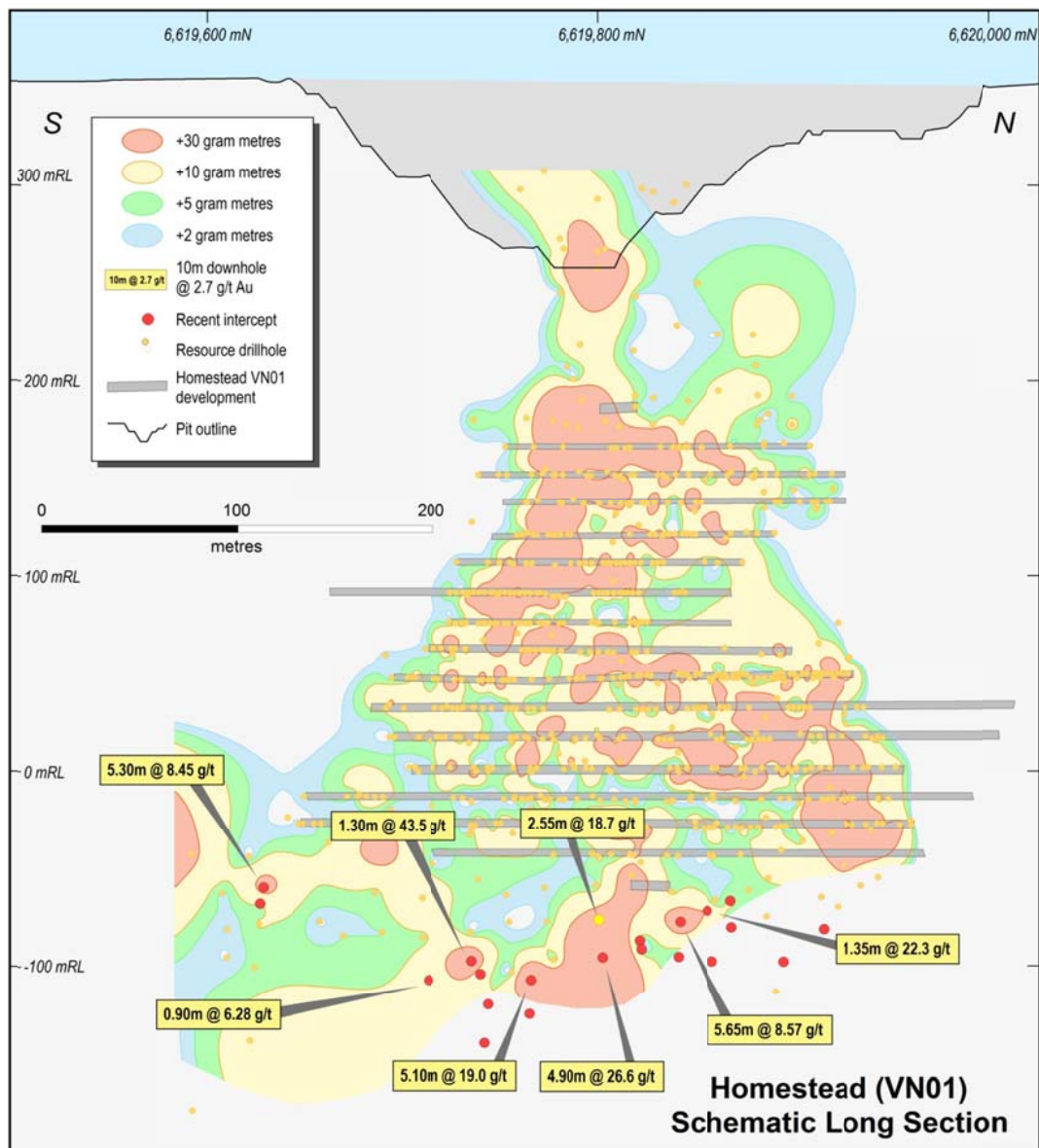
Exploration Update: April 2012

The VN01 South program has targeted both up-dip and down-dip extensions of previously identified mineralisation including a developing footwall lode which has previously returned an intercept of 1.62m @ 175.9g/t Au. Best recent results (including 1.0m @ 40.7g/t Au) lie adjacent to this previously recorded intercept (Figure 3).

The Black Flag Prospect is located 250m east of Homestead with previous open cut mining exploiting three mineralised lodes. There are discrete high grade shoots located within each of the lodes, and mineralisation remains open at depth. Recently commenced drilling is the first phase of a comprehensive program aimed at defining a high grade underground resource which could be accessible from Homestead.

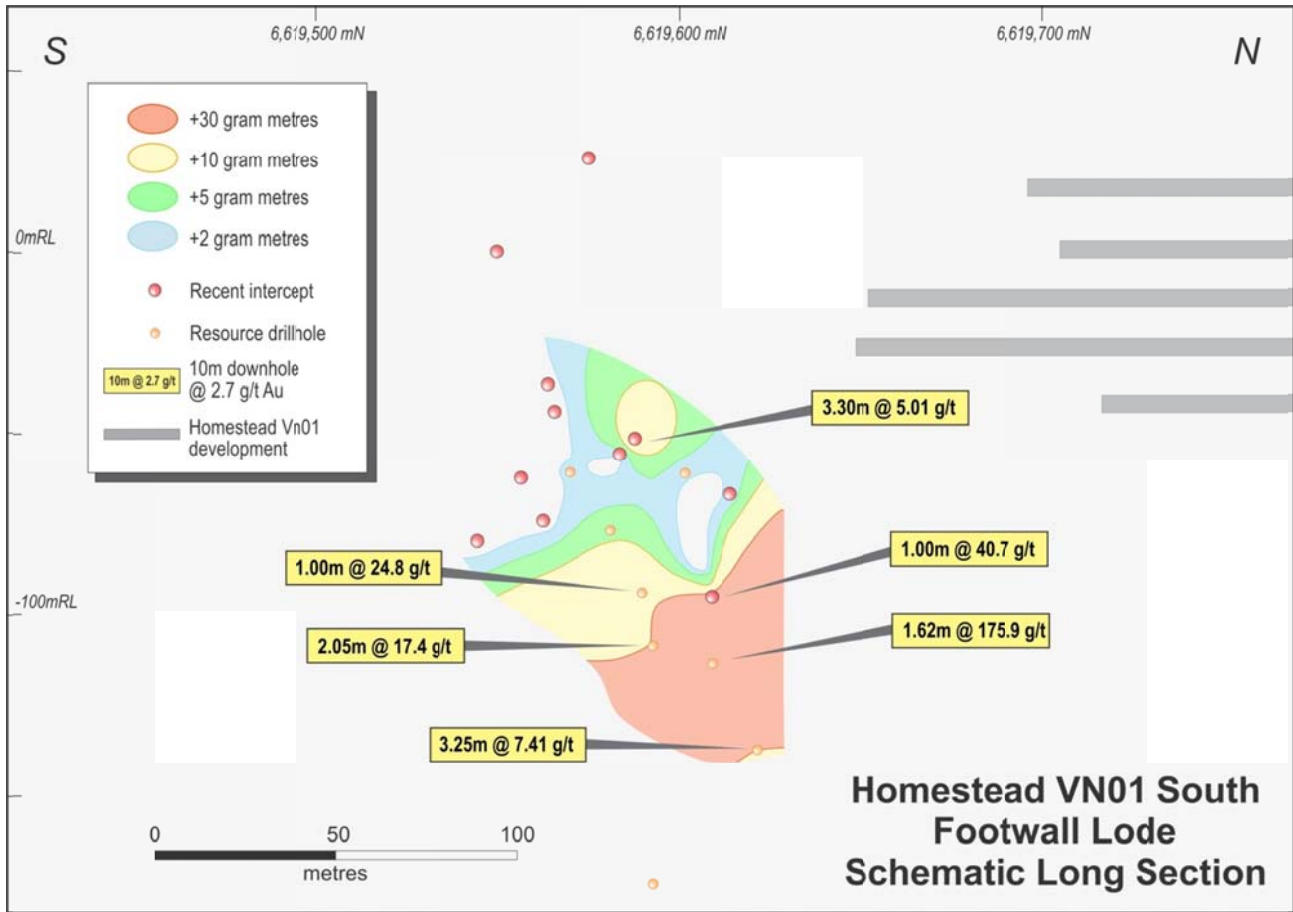
The most recent drill hole at Black Flag (BUD003) has intersected a 3m down-hole interval of laminated vein quartz with visible gold (Figure 4). Mineralisation is located in a new position mid-way between Homestead and Black Flag. Analytical results from the intercept are pending.

Figure 2: Homestead VN01 - Schematic long section showing recent significant down-dip results



Exploration Update: April 2012

Figure 3: Homestead VN01 South - Schematic long section of footwall lode



Exploration Update: April 2012

Figure 4: Black Flag West – Visible gold in drill hole BUD003



Enterprise Prospect, Ora Banda Project

The Enterprise Prospect is a substantial ore-body, with an Indicated and Inferred Mineral Resource of **15.4Mt at 2.10g/t Au containing 1.04Moz**. Both open cut and underground mining options are currently being evaluated.

The deposit is hosted by breccia and pervasive ankerite-biotite-sericite-pyrite altered ore material within a differentiated dolerite sill (Figure 5). Mineralisation is controlled by the intersection of east-west trending structures with favourable sub-units of the southwest dipping dolerite sequence. The main lode ore-body forms a broad, robust plunging pipe of mineralisation which remains open down-plunge to the west, where drilling density diminishes. East-west trending structures form a series of narrow sub-vertical ore lodges which extend upwards above the main ore lode into the oxide zone.

Exploration Update: April 2012

Drilling programs are targeting both oxide and primary mineralisation. Oxide RC drilling programs are testing mineralisation in sub-vertical ore lodes and in up-dip extensions of the main lode. Deep diamond drilling programs are targeting westward depth extensions of the main lode. 5,688m of RC and diamond core drilling has been completed in 31 drill holes during the period. Only two diamond tails in the Deeps program had been completed at the end of the period with analytical results pending.

Significant results from the oxide program to date include:

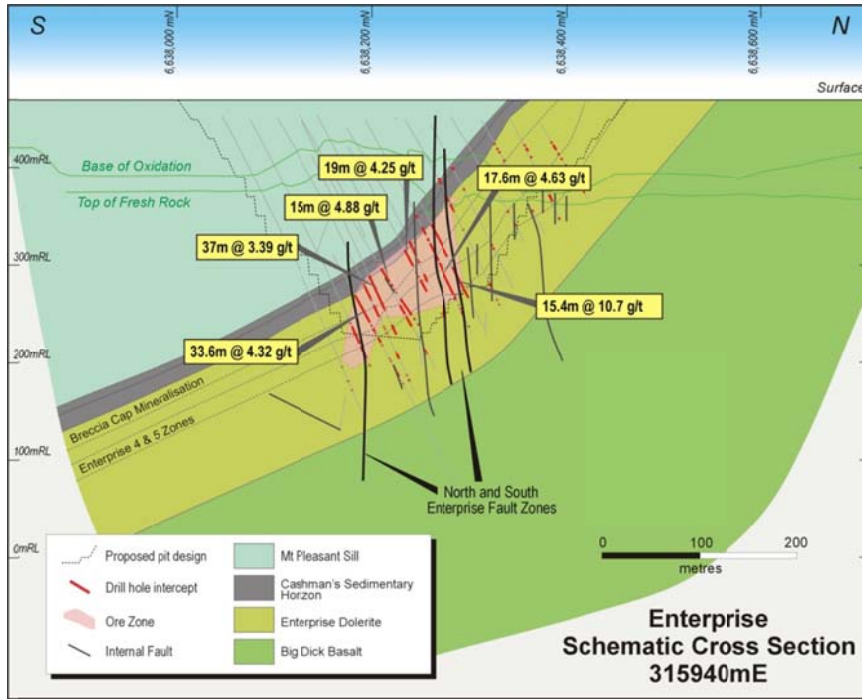
POBC0006	2m @ 12.0g/t Au from 89m 45m @ 1.60g/t Au from 106m
POBC0009	12m @ 1.28g/t Au from 84m 4m @ 5.60g/t Au from 119m
POBC0014	2m @ 8.95g/t Au from 4m 5m @ 6.99g/t Au from 17m 5m @ 3.68g/t Au from 34m
POBC0015	1m @ 35.7g/t Au from 7m
POBC0016	8m @ 2.19g/t Au from 25m
POBC0017	5m @ 3.42g/t Au from 42m
POBC0019	11m @ 3.19g/t Au from 67m 9m @ 1.57g/t Au from 90m
POBC0023	29m @ 1.49g/t Au from 109m

All results from the program are appended in Table 5.

Note: some of these drill holes have been extended at depth into primary mineralisation of the main lode and that consequently, some of the intercepts quoted above are from shallower primary ore zones.

Exploration Update: April 2012

Figure 5: Enterprise Deposit - Schematic cross section showing previously defined drill results



Janet Ivy Prospect, Binduli Project

The Janet Ivy deposit is located at the northern end of the Binduli mining camp and has been mined in three separate campaigns to date. The deposit still contains an Indicated and Inferred Mineral Resource of **5.71Mt @ 1.23g/t Au (226,000oz)** and a Probable Mineral Reserve of **1.58Mt @ 1.09g/t Au (55,000oz)**.

A drilling program targeting depth and strike extensions of the deposit has commenced and 4,227m of RC drilling has been completed in 30 drill holes.

Significant results from the program to date include:

PJIC032	18m @ 2.73g/t Au from 47m
PJIC045	4m @ 3.40g/t Au from 27m
	14m @ 1.68g/t Au from 95m
PJIC052	8m @ 2.11g/t Au from 46m
PJIC055	11m @ 2.37g/t Au from 42m
PJIC143	7m @ 1.51g/t Au from 19m
	9m @ 1.44g/t Au from 66m
PJIC152	10m @ 1.32g/t Au from 54m

All results from the program are appended in Table 6. Analytical results for a large portion of the program remain outstanding.

Exploration Update: April 2012

Rose West – Violet Prospect, Mount Pleasant Project

The Rose West - Violet Prospect is a palaeochannel-associated deposit situated within the Mount Pleasant Project area. The prospect is attractive due to its 'soft' oxide nature and relatively high grade in comparison to Paddington's large open cut base-load deposits. Small mining projects supplement base load feed from the larger, lower grade open cut deposits.

The nearby Blue Gum East deposit has recently been mined very successfully, yielding **369,000t @ 2.44g/t Au (29,000oz)**. Rose West - Violet is earmarked for development in FY2013 pending the outcome of the resource update, mine plan and feasibility study.

Mineralisation at Rose West - Violet lies in a flat blanket at, or slightly below, the palaeochannel/in-situ saprolite interface (Figure 6). Primary underlying lithologies comprise mafic volcanics and intrusive porphyry.

Recent close-spaced infill RC drilling down to 10m x 10m spacing locally, has been designed to demonstrate ore continuity within the core mineralised areas. Drilling comprised 3,587m in 83 RC drill holes.

Recent significant results from the program include:

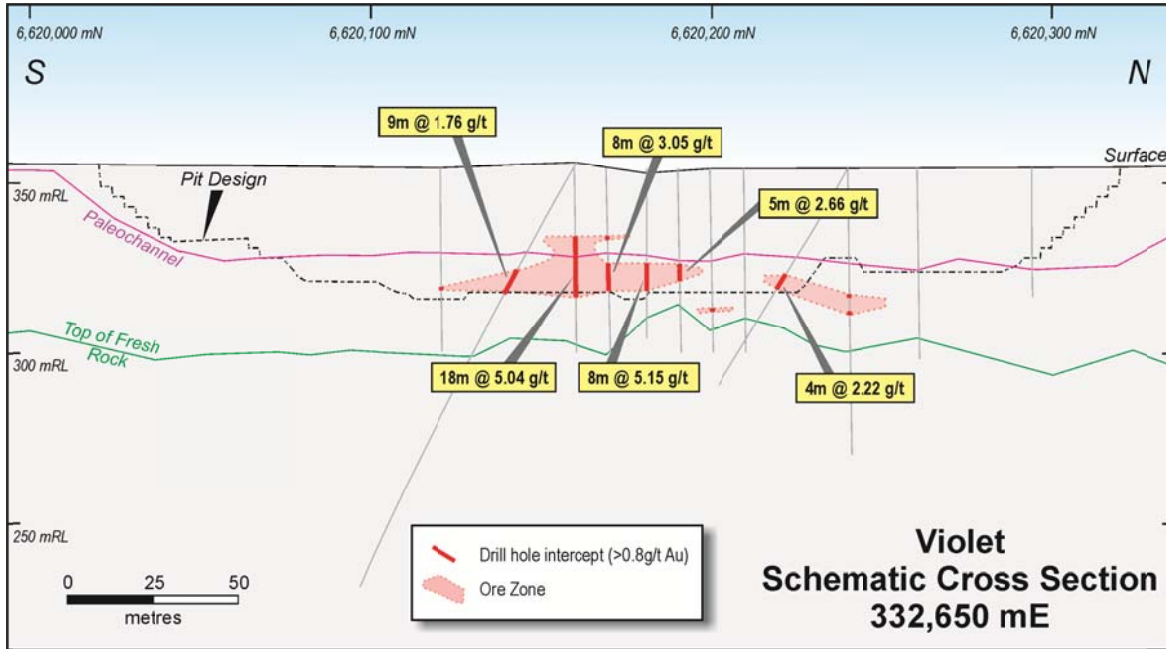
PMPC0502	15m @ 3.54g/t Au from 28m
PMPC0503	4m @ 5.70g/t Au from 27m
PMPC0509	5m @ 3.90g/t Au from 26m
PMPC0516	8m @ 2.16g/t Au from 30m
PMPC0520	4m @ 4.76g/t Au from 42m
PMPC0523	6m @ 4.09g/t Au from 30m
PMPC0531	5m @ 5.01g/t Au from 30m
PMPC0537	7m @ 4.14g/t Au from 27m
PMPC0538	9m @ 2.23g/t Au from 29m
PMPC0545	10m @ 2.75g/t Au from 30m
PMPC0546	7m @ 2.60g/t Au from 28m
PMPC0547	5m @ 2.75g/t Au from 28m
PMPC0551	12m @ 1.79g/t Au from 32m
PMPC0554	2m @ 8.55g/t Au from 28m
	7m @ 3.21g/t Au from 34m
PMPC0555	8m @ 4.48g/t Au from 29m
PMPC0560	8m @ 2.09g/t Au from 30m
PMPC0570	6m @ 2.56g/t Au from 30m

A full list of all recent results for the program is appended in Table 7.

High grade results delineate a core higher grade mineralised zone surrounded by lower grade ore material. Resource modelling update is currently in progress.

Exploration Update: April 2012

Figure 6: Rose West - Violet, Schematic cross section 332,650E



Federal Prospect, Golden Cities Project

The Federal Prospect is located in the Golden Cities Project area 15km north-east of the Paddington Mill and contains a substantial Indicated and Inferred Mineral Resource base of **6.73Mt @ 2.00g/t Au (433,000oz)**.

A short program of RC drilling has been completed comprising 1,194m in 5 drill holes to evaluate deeper mineralisation in the southern end of the deposit.

Significant results from the program include:

PGCC0146	4m @ 2.25g/t Au from 194m
	7m @ 1.94g/t Au from 209m
PGCC0147	19m @ 1.77g/t Au from 185m
PGCC0148	16m @ 1.04g/t Au from 226m
PGCC0149	12m @ 2.99g/t Au from 240m
Incl.	4m @ 6.20g/t Au from 241m

All results from the program are appended in Table 8.

A much larger program of drilling targeting infill of higher grade areas of the resource model will be planned in future.

Exploration Update: April 2012

Racetrack West Prospect, Mount Pleasant Project

The Racetrack West Prospect is located immediately west of the previously mined Racetrack deposit in the Mount Pleasant Project area.

A program of RC drilling comprising 460m in 4 RC drill holes has been completed with the aim of evaluating oxide potential in the area.

Significant results from the program include:

PMPC0613	5m @ 7.40g/t Au from 79m
PMPC0614	11m @ 2.84g/t Au from 25m

A full list of results is appended in Table 9.

Results from the short program are highly encouraging, with respectable intersected widths of higher grade oxide material indicating potential for shallow oxide resource definition. More substantial drilling programs will be planned in the future to continue resource evaluation.

Mulgarrie North Prospect, Mulgarrie Project

The Mulgarrie North Prospect is located 20km east-northeast of Paddington, and immediately north of the Mulgarrie deposit. The Mulgarrie deposit has been exploited previously by open cut mining and still contains an estimated Indicated and Inferred Mineral Resource of **1.49Mt @ 3.07g/t Au (147,000oz)**, and a Probable Reserve of **642,000t @ 3.53g/t Au (73,000oz)**. The area is characterised by discrete high grade pods of mineralisation.

A short program of RC drilling comprising 434m in 4 drill holes was completed in the previous reporting period targeting an area with historic underground workings. Results for the program are now available with significant results including:

PMGC0044	2m @ 19.6g/t Au from 102m
-----------------	----------------------------------

All results are listed in Table 10.

Results are indicative of typical high grade Mulgarrie style mineralisation and warrant further work at a later date.

Other Regional Programs

Other regional programs which have been completed during the period include:

- the Breakaway Dam Prospect (Carbine Project) where 958m of RC drilling have been completed in 10 holes;
- the Lady Bountiful Extended Project (Mount Pleasant North) where 744m of RC drilling have been completed in 13 holes; and
- the Golden Eagle Prospect (Mount Pleasant South) where 120m of RC drilling have been completed in 1 hole.

Exploration Update: April 2012

Best results from these programs were:

Breakaway Dam Prospect (Table 11)

PCZC0106	6m @ 1.40g/t Au from 34m
PCZC0107	7m @ 1.31g/t Au from 37m

Lady Bountiful Extended (Table 12)

PLBC0006	3m @ 2.64g/t Au from 35m
----------	--------------------------

Golden Eagle (Table 13)

PPDC0231	1m @ 4.52g/t Au from 101m
----------	---------------------------

All results from Breakaway Dam, Lady Bountiful Extended and Golden Eagle are appended in Tables 11 to 13 respectively.

Corporate Directory

Board & Executive Management

Tim Prowse
Non-Executive Chairman

André Labuschagne
Managing Director

Anne Bi
Non-executive Director

Allen Wu
Non-executive Director
Xianhul Zeng
Non-executive Director

Robert Brainsbury
Chief Financial Officer

Terry Moylan
General Manager Paddington

Peter Ruzicka
General Manager Geology and
Exploration

Ian Sheppard
General Manager Technical and
Business Development

Co-company Secretary

Leni Stanley
Robert Brainsbury

Media Relations

Warrick Hazeldine/Annette Ellis
Purple Communications
Tel: +61 (8) 6314 6300

Share Capital

849.6 million ordinary shares
Nil listed options
12.0 million unlisted options.

Quarterly Share Price Activity

2009	High	Low	Last
March	\$0.170	\$0.090	\$0.140
June	\$0.260	\$0.140	\$0.200
September	\$0.280	\$0.190	\$0.250
December	\$0.385	\$0.225	\$0.285

2010	High	Low	Last
March	\$0.320	\$0.170	\$0.220
June	\$0.230	\$0.170	\$0.170
September	\$0.220	\$0.160	\$0.200
December	\$0.260	\$0.190	\$0.190

2011	High	Low	Last
March	\$0.200	\$0.160	\$0.170
June	\$0.185	\$0.130	\$0.140
September	\$0.235	\$0.135	\$0.190
December	\$0.240	\$0.160	\$0.175

2012	High	Low	Last
March	\$0.220	\$0.165	\$0.185

Competent Persons Statement

The information in this report that relates to Mineral Resources is based on information compiled by Peter Ruzicka and Andrew Bewsher. The information in this report that relates to Mineral Reserves is compiled by Ian Paynter and Cullum Winn. Exploration drilling results have been compiled by Peter Ruzicka. In some instances material relating to historical resource models is reported, these models have been reviewed and validated by Peter Ruzicka.

Ian Paynter, Cullum Winn and Peter Ruzicka are members of the Australian Institute of Mining and Metallurgy. Ian Paynter, Peter Ruzicka and Cullum Winn are all full-time employees of Norton Gold Fields Limited. Andrew Bewsher is a member of the Australian Institute of Geoscientists and a full-time employee of BM Geological Services PL, a consulting group to Norton Gold Fields Limited.

Messrs. Winn, Paynter, Ruzicka and Bewsher all have sufficient experience relevant to the styles of mineralisation and types of deposits which are covered in this report, and to the activity which they are undertaking to qualify as Competent Persons as defined in the 2004 edition of the 'Australasian Code for Reporting of Exploration Results, Mineral Resources and Ore Reserves'. Cullum Winn, Ian Paynter, Peter Ruzicka and Andrew Bewsher all consent to the inclusion in this report of matters based on their information in the form and context in which it appears.

Principal Office

Level 1, 79 Hope Street
South Brisbane Queensland 4101
Australia

Registered Office

Level 1, 101 Edward Street
Brisbane Queensland 4000
Phone +61 (0) 7 3846 9200
Fax +61 (0) 7 3255 0344

Postal Address

Level 1, 79 Hope Street
South Brisbane Queensland 4101
Australia

www.nortongoldfields.com.au

Share Registry

Link Market Services
Level 15, 324 Queen Street
Brisbane Queensland 4000

Tel 1300 554 474 (within Australia)
Tel +61 (2) 8280 7111 (overseas)

Please direct shareholding enquiries to the share registry.

Paddington Ore Reserve and Mineral Resource Statement (gold) as at 31 December 2011

Reserve	Mt	g/t	Moz
Proven	0.8	1.33	0.04
Probable	15.3	1.97	0.96
Total	16.1	1.94	1.00

Resource

Resource	Mt	g/t	Moz
Measured	0.9	2.49	0.07
Indicated	68.3	1.45	3.19
Inferred	41.6	2.01	2.70
Total	110.8	1.67	5.96

Mount Morgan Mineral Resource Statement (gold) as at 30 June 2010

	Mt	g/t	Moz
Indicated	2.487	1.59	0.127
Inferred	5.861	1.07	0.199
Total	8.348	1.23	0.326

Exploration Update: April 2012

Paddington Resource Statement: Ore Reserve (31 December 2011)

Project	Proven			Probable			Total Reserve		
	Mt	g/t	oz	Mt	g/t	oz	Mt	g/t	oz
Enterprise				5.55	2.52	450,000	5.55	2.52	450,000
Janet Ivy				1.58	1.09	55,000	1.58	1.09	55,000
Green Gum				0.58	2.52	47,000	0.58	2.52	47,000
Blue Gum East				0.20	2.92	19,000	0.20	2.92	19,000
Homestead	0.05	10.2	16,000	0.14	8.96	41,000	0.19	9.28	57,000
Navajo Chief				3.68	1.06	125,000	3.68	1.06	125,000
Rose West				0.24	1.97	15,000	0.24	1.97	15,000
Golden Flag				0.26	2.50	21,000	0.26	2.50	21,000
Federal				1.73	1.88	105,000	1.73	1.88	105,000
Mulgarrie				0.64	3.53	73,000	0.64	3.53	73,000
Stockpiles	0.81	0.80	21,000	0.64	0.73	15,000	1.45	0.77	36,000
Total Reserve	0.86	1.33	37,000	15.3	1.97	966,000	16.1	1.94	1,003,000

** Apparent arithmetic inconsistencies are due to rounding*

Exploration Update: April 2012

Paddington Resource Statement: Mineral Resource (includes Ore Reserve) (31 December 2011)

Project	Measured			Indicated			Inferred			Total Resource		
	Mt	g/t	oz	Mt	g/t	oz	Mt	g/t	oz	Mt	g/t	oz
Havana				4.29	1.69	233,000	0.26	1.73	14,000	4.55	1.69	247,000
Enterprise				10.3	2.27	749,000	5.10	1.75	287,000	15.4	2.10	1,037,000
Mulgarrie				1.05	3.22	109,000	0.44	2.72	39,000	1.49	3.07	147,000
Federal				3.74	1.92	231,000	2.99	2.10	202,000	6.73	2.00	433,000
Golden Flag				0.43	2.10	29,000	0.33	1.92	20,000	0.76	2.02	49,000
Mt Pleasant				2.81	2.42	219,000	8.47	2.95	803,000	11.3	2.82	1,021,000
Rose West				0.46	1.80	27,000	0.03	1.81	2,000	0.50	1.80	29,000
Natal							0.38	2.46	30,000	0.38	2.46	30,000
Janet Ivy				3.39	1.23	133,000	2.32	1.24	93,000	5.71	1.23	226,000
Jakarta				1.77	1.15	65,000	0.42	1.02	14,000	2.19	1.13	79,000
Green Gum				2.01	2.53	163,000	0.21	5.11	35,000	2.22	2.78	198,000
Blue Gum East				0.20	3.10	20,000	0.13	1.44	6,000	0.34	2.45	26,000
Homestead UG	0.07	22.6	49,000	0.11	15.6	55,000	0.09	12.6	38,000	0.27	16.5	142,000
Golden Kilometre							0.76	4.17	102,000	0.76	4.17	102,000
Tuart UG							0.74	6.00	142,000	0.74	6.00	142,000
Lady Bountiful Extension				2.82	1.72	156,000	1.43	1.73	79,000	4.25	1.72	235,000
Fort William				0.23	2.20	16,000	1.78	1.26	72,000	2.00	1.37	88,000
Fort Scott				0.32	2.08	21,000	0.13	1.26	5,000	0.45	1.84	27,000
Navajo Chief				15.8	1.01	511,000	3.17	1.08	110,000	18.9	1.02	621,000
Navajo Chief Low Grade				12.8	0.60	244,000	2.67	0.59	51,000	15.4	0.59	295,000
Apache							0.63	1.67	34,000	0.63	1.67	34,000
Ben Hur (1,2,3)				3.60	1.20	139,000	5.68	2.08	381,000	9.29	1.74	520,000
Pitman South							0.10	2.20	7,000	0.10	2.20	7,000
Walsh & Walsh North							0.42	1.77	24,000	0.42	1.77	24,000
Matts Dam							0.34	1.47	16,000	0.34	1.47	16,000
Porphyry				1.66	1.09	58,000	0.68	1.25	27,000	2.34	1.14	85,000
Liberty West							0.54	1.94	34,000	0.54	1.94	34,000
Stockpiles	0.81	0.80	21,000	0.64	0.73	15,000	1.37	0.65	29,000	2.82	0.71	65,000
Total Mineral Resource	0.88	2.49	70,000	68.3	1.45	3,195,000	41.6	2.01	2,696,000	110.8	1.67	5,961,000

* Apparent arithmetic inconsistencies are due to rounding

Exploration Update: April 2012

Table 2: Homestead VN01 down-dip – Significant underground diamond core results

Hole_ID	AMG_East	AMG_North	RL	Dip	Azi	Depth	From (m)	To (m)	DH Width(m)	Grade g/t Au
HUD312	329935	6619804	25	-35	36	191.55	158.4	159.5	1.1	11.1
							164.4	165.1	0.7	12.6
HUD313	329935	6619804	25	-40	63	176.5	153.15	154.5	1.35	22.3
HUD314	329935	6619803	25	-43	68	164.6	12.75	13.65	0.9	5.18
							28.25	29.15	0.9	4.41
							146.8	152.45	5.65	8.57
HUD324	329935	6619768	25	-34	155	201.3	65.02	68.05	3.03	10.0
							185.57	186.1	0.53	20.4
HUD325	329935	6619768	25	-31	160	248.3	39.4	39.79	0.39	8.69
							63.2	64.12	0.92	9.77
							208.67	209.17	0.5	4.65
							222	223	1	24.8
							225.78	226.17	0.39	9.91
							229.12	230.67	1.55	6.00
HUD327	329935	6619804	25	-35	43	227.6	7.65	8.2	0.55	6.45
HUD328	329935	6619804	25	-39	48	218.6	7.65	8.65	1	3.85
HUD333	329935	6619803	25	-52	92	170.4	148	152.9	4.9	26.6
HUD334	329936	6619774	25	-56	102	188	159.6	160.6	1	3.75
							164.2	166	1.8	11.8
HUD335	329936	6619773	25	-54	116	172	136.95	138.8	1.85	9.95
							148.2	149.5	1.3	43.5
							152.5	153.5	1	5.00
							160.5	161.5	1	3.54
HUD336	329936	6619773	25	-53	128	182.6	123	123.9	0.9	6.28
							159.35	160	0.65	3.74
							164	164.6	0.6	24.3
HUD539	329936	6619772	25	-58	95	191.4	153.6	158.7	5.1	19.0
							163.1	164.65	1.55	7.38
HUD552	330129	6619654	55	-43	257	227.5	133.2	134.1	0.9	24.0
							165.55	170.85	5.3	8.45
							179.3	179.8	0.5	17.3

Analysis by 50g Fire Assay

Results compiled by using a 3.5g/t cut-off grade, no top-cut grade

Maximum of 2m internal dilution , minimum interval of 0.3 m

Exploration Update: April 2012

Table 3: Homestead VN01 South – Significant underground diamond core results

Hole_ID	AMG_East	AMG_North	RL	Dip	Azi	Depth	From (m)	To (m)	DH Width(m)	Grade g/t Au
HUD474A	329935	6619767	26	-25	163	254.4	121.5	122	0.5	3.84
HUD478	329935	6619767	26	-25	169	305.5	68.05	69.4	1.35	8.93
							139	139.6	0.6	5.33
							269.7	270.05	0.35	8.79
HUD485	330129	6619654	55	-15	225	191.5	4.19	4.90	0.71	5.52
HUD488	330129	6619654	55	-4	225	206.7	93.09	94.93	1.84	15.1
HUD490	330129	6619654	56	-6	260	125.9	30.49	31.0	0.51	3.94
HUD492	330129	6619654	55	18	243	140.8	31.48	31.81	0.33	9.56
							34.86	35.36	0.5	4.56
							39.83	41.01	1.18	10.4
							100.36	100.96	0.6	5.84
HUD545	330136	6619658	56	-38	240	206.3	173.1	176.4	3.3	5.01
HUD547	330136	6619656	56	-48	250	222.9	200.3	200.62	0.32	15.5
							203	204	1	40.7
HUD551	330129	6619654	55	-41	238	233.3	174.33	174.79	0.46	5.46
HUD553	330129	6619654	55	-46	260	230.8	166	166.7	0.7	31.6
							186.7	187.08	0.38	61.2
HUD585	330129	6619654	55	-1	185	184.9	153	154	1	4.83
							160.45	160.85	0.4	104
HUD587	330129	6619654	55	14	213	215.5	35.69	36	0.31	10.9
							47.87	48.25	0.38	24.2
							95	96	1	9.64
							162	163	1	10.5
HUD589	330129	6619654	55	-21	220	220	151	152	1	11.6
							169.7	170	0.3	7.57
Analysis by 50g Fire Assay Results compiled by using a 3.5g/t cut-off grade, no top-cut grade Maximum of 2m internal dilution, minimum interval of 0.3 m										

Exploration Update: April 2012

Table 4: Black Flag – Significant underground diamond core results

Hole_ID	AMG_East	AMG_North	RL	Dip	Azi	Depth	From (m)	To (m)	DH Width(m)	Grade g/t Au
BUD001	330148	6619665	57	37	137	307	251.1	251.4	0.3	75.0
							281.3	284.45	3.15	1.94
							289.15	290	0.85	3.61
BUD004	330149	6619666	58	38	143	318.1	208.6	209	0.4	3.69
							240.5	241.2	0.7	5.27
Analysis by 50g Fire Assay Results compiled by using a 3.5g/t cut-off grade, no top-cut grade Maximum of 2m internal dilution , minimum interval of 0.3 m										

Table 5: Enterprise Prospect – Significant RC drilling results

Hole_ID	AMG_East	AMG_North	Dip	Azi	RL	Depth	From (m)	To (m)	DH Width(m)	Grade g/t Au
POBC0005	315974	6638396	-60	360	453	72	22	23	1	1.01
							29	31	2	1.00
							34	37	3	1.42
							52	53	1	1.90
POBC0006	316007	6638199	-60	360	456	151	89	91	2	12.0
							94	97	3	1.35
							106	151	45	1.60
POBC0008	315950	6638241	-60	360	455	114	69	71	2	1.78
							82	83	1	0.81
							92	105	13	1.23
POBC0009	315976	6638241	-60	360	456	175	57	58	1	0.85
							62	64	2	3.04
							84	96	12	1.28
							111	112	1	2.50
							119	123	4	5.60
							145	146	1	1.03
							154	155	1	1.12
							166	168	2	1.20
174	175	1	0.96							
Analysis by 30g Fire Assay Results compiled by using a 0.8g/t cut-off grade, no top-cut grade Maximum of 2m internal dilution										

Exploration Update: April 2012

Table 5: Enterprise Prospect – Significant RC drilling results (Cont)

Hole_ID	AMG_East	AMG_North	Dip	Azi	RL	Depth	From (m)	To (m)	DH Width(m)	Grade g/t Au
POBC0010	315947	6638265	-60	360	454	180	38	39	1	1.09
							51	52	1	1.61
							60	61	1	7.90
							95	96	1	1.71
							100	101	1	1.47
							112	113	1	1.44
							162	163	1	1.50
POBC0011	315976	6638274	-60	360	455	145	25	26	1	1.58
							36	40	4	0.62
							44	46	2	4.18
							56	58	2	0.93
							80	81	1	0.93
							119	121	2	1.99
POBC0012	315948	6638294	-60	360	454	130	0	2	2	1.88
							14	15	1	3.09
							45	46	1	0.98
							49	50	1	1.01
							55	57	2	1.07
							64	65	1	0.87
							70	72	2	1.07
114	115	1	1.31							
POBC0013	315975	6638303	-60	360	455	126	59	60	1	1.64
							69	70	1	1.80
							73	76	3	0.80
POBC0014	315946	6638323	-60	360	453	168	4	6	2	8.95
							11	13	2	1.06
							17	22	5	6.99
							34	39	5	3.68
							42	43	1	1.32
							47	48	1	2.38
							51	53	2	1.86
66	67	1	1.13							

Analysis by 30g Fire Assay

Results compiled by using a 0.8g/t cut-off grade, no top-cut grade

Maximum of 2m internal dilution

Exploration Update: April 2012

Table 6: Janet Ivy Prospect – Significant RC drilling results

Hole_ID	MGA_East	MGA_North	Dip	Azi	RL	Depth	From (m)	To (m)	DH Width(m)	Grade g/t Au
PJIC032	345430	6593823	-60	230	369	151	47	65	18	2.73
							112	113	1	0.84
							118	120	2	1.59
							137	138	1	0.98
PJIC045	345450	6593893	-60	230	369	151	19	22	3	0.77
							27	31	4	3.40
							34	42	8	1.11
							50	53	3	0.76
							56	58	2	2.02
							65	66	1	0.9
							95	109	14	1.68
							112	116	4	1.81
							119	120	1	24.9
							125	129	4	1.53
							134	135	1	1.14
PJIC047	345481	6593919	-60	230	369	151	20	22	2	0.92
							37	38	1	0.88
							48	49	1	0.8
							91	92	1	2.18
							113	114	1	1.40
PJIC049	345512	6593946	-60	230	369	151	50	51	1	2.63
							66	67	1	1.15
							70	71	1	1.89
PJIC052	345445	6593919	-60	230	369	151	14	16	2	2.66
							19	25	6	0.98
							28	29	1	1.12
							36	43	7	0.89
							46	54	8	2.11
							57	58	1	1.35
							61	62	1	2.79
							66	67	1	2.57
							70	76	6	2.02
							81	82	1	3.08
							93	95	2	0.96
							102	106	4	0.89
							110	125	15	0.88
							129	131	2	1.49
142	147	5	1.17							
Analysis by 50g Fire Assay Results compiled by using a 0.8g/t cut-off grade, no top-cut grade Maximum of 2m internal dilution										

Exploration Update: April 2012

Table 6: Janet Ivy Prospect – Significant RC drilling results (Cont)

Hole_ID	MGA_East	MGA_North	Dip	Azi	RL	Depth	From (m)	To (m)	DH Width(m)	Grade g/t Au
PJIC053	345463	6593932	-60	230	369	151	7	8	1	1.43
							12	13	1	2.22
							24	25	1	1.98
							29	32	3	1.11
							61	62	1	2.00
							93	94	1	2.07
							107	108	1	3.12
PJIC054	345476	6593944	-60	230	369	151	17	18	1	1.28
							37	40	3	1.53
							94	95	1	1.84
							100	101	1	1.91
							109	110	1	6.64
							115	116	1	1.44
							119	120	1	2.29
129	130	1	2.68							
PJIC055	345504	6593976	-60	230	369	151	42	53	11	2.37
							71	75	4	1.57
							134	135	1	0.81
							138	141	3	1.96
							148	149	1	11.4
PJIC143	345274	6594214	-90	360	330	114	1	2	1	1.13
							5	8	3	0.82
							13	14	1	1.47
							19	26	7	1.51
							35	36	1	13.0
							42	46	4	1.93
							52	54	2	0.94
							62	63	1	0.86
							66	75	9	1.44
							78	81	3	0.84
113	114	1	1.4							
PJIC146	345324	6594258	-90	360	328	103	5	6	1	1.56
							12	13	1	1.34
							59	60	1	1

Analysis by 50g Fire Assay
 Results compiled by using a 0.8g/t cut-off grade, no top-cut grade
 Maximum of 2m internal dilution

Exploration Update: April 2012

Table 6: Janet Ivy Prospect – Significant RC drilling results (Cont)

Hole_ID	MGA_East	MGA_North	Dip	Azi	RL	Depth	From (m)	To (m)	DH Width(m)	Grade g/t Au
PJIC152	345243	6594239	-90	360	325	86	2	8	6	1.12
							11	14	3	1.31
							17	18	1	1.04
							26	27	1	1.17
							31	35	4	1.2
							47	49	2	1.21
							54	64	10	1.32
							76	78	2	1.04
PJIC153	345260	6594254	-90	360	325	116	0	1	1	3.76
							18	19	1	3.18
							32	33	1	0.86
							49	50	1	1.17
							71	72	1	1.1
							77	80	3	1.28
							88	89	1	1.38
							103	105	2	1.11
	113	116	3	0.81						
PJIC154	345280	6594270	-90	360	325	102	54	57	3	0.73
PJIC155	345286	6594276	-60	50	325	96	48	49	1	0.99
							86	90	4	0.85
							93	94	1	2.69
PJIC162	345145	6594223	-60	50	366	151	61	64	3	1.44
							84	85	1	2.81
							94	95	1	0.94
							103	109	6	0.8
							116	119	3	1.82
							138	142	4	1.26
	145	147	2	2.27						

Analysis by 50g Fire Assay
 Results compiled by using a 0.8g/t cut-off grade, no top-cut grade
 Maximum of 2m internal dilution

Exploration Update: April 2012

Table 7: Rose West - Violet Prospect – Significant RC drilling results

Hole_ID	AMG_East	AMG_North	Dip	Azi	RL	Depth	From (m)	To (m)	DH Width(m)	Grade g/t Au
PMPC0491	332587	6620215	-90	360	354	55	35	40	5	1.07
							50	51	1	1.04
PMPC0494	332607	6620228	-90	360	354	48	38	39	1	1.18
PMPC0495	332607	6620248	-90	360	354	48	36	38	2	1.06
PMPC0496	332607	6620327	-90	360	354	36	12	13	1	0.85
PMPC0497	332618	6620237	-90	360	354	42	31	32	1	2.74
PMPC0498	332618	6620337	-90	360	354	36	29	33	4	2.76
PMPC0499	332628	6620237	-90	360	354	36	27	28	1	1.67
PMPC0500	332628	6620337	-90	360	354	42	31	33	2	1.33
PMPC0501	332658	6620278	-90	360	354	42	37	38	1	1.62
PMPC0502	332657	6620298	-90	360	354	54	28	43	15	3.54
PMPC0503	332657	6620317	-90	360	354	48	27	31	4	5.70
							34	35	1	1.01
							39	41	2	1.67
PMPC0504	332657	6620337	-90	360	354	42	30	31	1	1.45
PMPC0505	332668	6620227	-90	360	354	36	29	30	1	0.81
PMPC0506	332667	6620248	-90	360	354	36	30	34	4	2.42
PMPC0507	332667	6620267	-90	360	354	42	28	29	1	1.22
PMPC0508	332667	6620290	-90	360	354	48	29	30	1	0.85
							33	34	1	1.20
							39	40	1	0.83
PMPC0509	332666	6620308	-90	360	354	48	26	31	5	3.90
							35	45	10	1.23
PMPC0510	332678	6620307	-90	360	354	42	38	41	3	0.87
PMPC0511	332678	6620328	-90	360	354	42	31	38	7	1.17
PMPC0512	332688	6620248	-90	360	354	36	33	34	1	1.72
PMPC0513	332687	6620268	-90	360	354	36	27	28	1	1.04
							33	34	1	1.38
PMPC0514	332687	6620327	-90	360	354	42	31	32	1	0.92
							35	39	4	2.52
PMPC0515	332689	6620369	-90	360	354	42	29	30	1	3.33
PMPC0516	332707	6620308	-90	360	354	42	30	38	8	2.16
PMPC0516A	332697	6620267	-90	360	354	42	32	36	4	1.81
PMPC0517	332707	6620288	-90	360	354	42	32	34	2	1.77
PMPC0518	332708	6620269	-90	360	354	42	33	34	1	1.97
PMPC0519	332707	6620248	-90	360	354	42	37	40	3	1.59
PMPC0520	332707	6620227	-90	360	355	48	42	46	4	4.76
PMPC0521	332706	6620208	-90	360	355	48	44	46	2	1.03
PMPC0523	332728	6620247	-90	360	354	42	4	5	1	1.13
							30	36	6	4.09
PMPC0524	332727	6620267	-90	360	354	36	28	30	2	1.33
							34	35	1	0.93

Analysis by 50g Fire Assay
 Results compiled by using a 0.8g/t cut-off grade, no top-cut grade
 Maximum of 2m internal dilution

Exploration Update: April 2012

Table 7: Rose West - Violet Prospect – Significant RC drilling results (Cont)

Hole_ID	AMG_East	AMG_North	Dip	Azi	RL	Depth	From (m)	To (m)	DH Width(m)	Grade g/t Au
PMPC0525	332727	6620297	-90	360	354	42	18	19	1	0.87
							30	34	4	1.95
PMPC0526	332747	6620268	-90	360	354	48	43	48	5	1.79
PMPC0529	332757	6620247	-90	360	355	54	41	46	5	2.00
PMPC0530	332756	6620267	-90	360	354	54	37	39	2	0.96
							52	53	1	0.96
PMPC0531	332756	6620287	-90	360	354	48	30	35	5	5.01
							43	44	1	0.99
PMPC0532	332757	6620308	-90	360	354	48	33	37	4	2.54
PMPC0533	332767	6620268	-90	360	354	48	31	37	6	1.32
PMPC0535	332777	6620269	-90	360	355	42	29	32	3	1.01
							38	40	2	1.13
PMPC0536	332777	6620287	-90	360	354	42	27	35	8	0.99
PMPC0537	332777	6620308	-90	360	354	42	19	20	1	0.81
							27	34	7	4.14
PMPC0538	332776	6620327	-90	360	354	42	29	38	9	2.23
PMPC0539	332776	6620348	-90	360	354	42	14	15	1	3.24
							29	30	1	1.15
PMPC0540	332787	6620288	-90	360	354	42	31	34	3	0.95
PMPC0541	332787	6620307	-90	360	354	42	30	36	6	1.61
PMPC0542	332787	6620388	-90	360	354	42	21	22	1	5.04
							31	32	1	0.82
							35	38	3	1.63
PMPC0543	332797	6620269	-90	360	355	42	4	5	1	1.52
PMPC0544	332797	6620287	-90	360	355	42	27	29	2	1.77
PMPC0545	332796	6620308	-90	360	354	42	30	40	10	2.75
PMPC0546	332796	6620328	-90	360	354	42	17	18	1	0.96
							28	35	7	2.60
PMPC0547	332796	6620347	-90	360	354	48	28	33	5	2.75
PMPC0548	332797	6620367	-90	360	354	36	31	35	4	0.80
PMPC0549	332796	6620387	-90	360	354	42	28	30	2	1.73
PMPC0551	332806	6620289	-90	360			27	29	2	1.87
							32	44	12	1.79
PMPC0553	332816	6620287	-90	360	355	48	32	35	3	1.94
							40	41	1	2.69
PMPC0554	332817	6620308	-90	360	355	48	28	30	2	8.55
							34	41	7	3.21
PMPC0555	332817	6620328	-90	360	354	42	29	37	8	4.48
PMPC0556	332817	6620347	-90	360	354	42	33	36	3	1.34
PMPC0557	332827	6620268	-90	360	355	42	31	32	1	1.24
PMPC0558	332827	6620288	-90	360	355	42	30	31	1	0.82
							34	37	3	1.12
PMPC0559	332826	6620308	-90	360	355	48	30	39	9	1.03

Analysis by 50g Fire Assay
 Results compiled by using a 0.8g/t cut-off grade, no top-cut grade
 Maximum of 2m internal dilution

Exploration Update: April 2012

Table 7: Rose West - Violet Prospect – Significant RC drilling results (Cont)

Hole_ID	AMG_East	AMG_North	Dip	Azi	RL	Depth	From (m)	To (m)	DH Width(m)	Grade g/t Au
PMPC0560	332827	6620328	-90	360	355	48	16	17	1	1.42
							30	38	8	2.09
PMPC0561	332827	6620348	-90	360	354	42	32	35	3	1.68
PMPC0563	332828	6620392	-90	360	354	42	33	34	1	1.76
PMPC0565	332836	6620276	-90	360	355	42	32	33	1	3.78
PMPC0567	332837	6620318	-90	360	355	42	26	29	3	3.26
PMPC0569	332841	6620297	-90	360	355	36	31	34	3	1.55
PMPC0570	332840	6620338	-90	360	355	42	30	36	6	2.56
PMPC0571	332842	6620379	-90	360	355	48	13	14	1	1.70
							31	32	1	1.37
PMPC0572	332867	6620298	-90	360	355	36	30	31	1	1.63

Analysis by 50g Fire Assay

Results compiled by using a 0.8g/t cut-off grade, no top-cut grade

Maximum of 2m internal dilution

Table 8: Federal Prospect – Significant RC drilling results

Hole_ID	AMG_East	AMG_North	Dip	Azi	RL	Depth	From (m)	To (m)	DH Width(m)	Grade g/t Au	
PGCC0145	347597	6634345	-55	213	360	210	177	179	2	2.13	
							184	185	1	1.65	
							200	201	1	0.88	
PGCC0146	347601	6634351	-60	225	360	225	88	89	1	2.68	
							194	198	4	2.25	
							209	216	7	1.94	
PGCC0147	347581	6634374	-60	225	360	235	185	204	19	1.77	
							208	210	2	2.01	
							221	222	1	2.05	
PGCC0148	347603	6634400	-60	225	360	250	212	213	1	0.88	
							226	242	16	1.04	
PGCC0149	347584	6634431	-60	225	360	264	224	225	1	1.39	
							240	252	12	2.99	
							Incl.	241	245	4	6.20
							243	244	1	3.51	
							244	245	1	10.3	
							248	249	1	2.15	

Analysis by 50g Fire Assay

Results compiled by using a 0.8g/t cut-off grade, no top-cut grade

Maximum of 2m internal dilution

QUARTERLY EXPLORATION UPDATE: APRIL 2012

Table 9: Racetrack West Prospect – Significant RC drilling results

Hole_ID	AMG_East	AMG_North	Dip	Azi	RL	Depth	From (m)	To (m)	DH Width(m)	Grade g/t Au
PMPC0613	329837	6618017	-60	090	348	102	46	47	1	1.82
							73	74	1	0.80
							79	84	5	7.40
							99	100	1	3.23
PMPC0614	329877	6618017	-60	090	348	80	25	36	11	2.84
PMPC0615	329977	6618017	-60	090	348	178	56	57	1	0.85
							78	79	1	0.82
PMPC0616	330017	6618017	-60	090	348	100	35	36	1	1.72
Analysis by 30g Fire Assay Results compiled by using a 0.8g/t cut-off grade, no top-cut grade Maximum of 2m internal dilution										

Table 10: Mulgarrie North Prospect – Significant RC drilling results

Hole_ID	AMG_East	AMG_North	Dip	Azi	RL	Depth	From (m)	To (m)	DH Width(m)	Grade g/t Au
PMGC0044	355948	6638773	-60	215	300	150	102	104	2	19.6
PMGC0045	355985	6638711	-60	215	300	100	83	84	1	1.19
PMGC0047	356048	6638697	-60	215	300	34	22	23	1	0.98
Analysis by 30g Fire Assay Results compiled by using a 0.8g/t cut-off grade, no top-cut grade Maximum of 2m internal dilution										

QUARTERLY EXPLORATION UPDATE: APRIL 2012

Table 11: Breakaway Dam Prospect – Significant RC drilling results

Hole_ID	AMG_East	AMG_North	Dip	Azi	RL	Depth	From (m)	To (m)	DH Width(m)	Grade g/t Au
PCZC0100	305102	6623926	-60	220	350	84	38	40	2	1.31
PCZC0102	305137	6623872	-60	220	350	96	29	33	4	1.54
							39	40	1	1.00
							58	59	1	1.49
PCZC0103	305107	6623901	-60	220	350	142	24	25	1	6.39
							69	71	2	1.40
							74	75	1	1.81
							78	83	5	1.48
							88	89	1	1.22
122	123	1	1.16							
PCZC0104	305126	6623893	-60	220	350	60	22	23	1	1.16
							28	29	1	1.93
							46	49	3	2.82
PCZC0105	305185	6623871	-60	220	350	90	40	54	14	0.71
							57	58	1	1.71
PCZC0106	304043	6623851	-60	220	350	78	34	40	6	1.40
PCZC0107	304096	6623822	-60	220	350	78	37	44	7	1.31
							60	61	1	0.83
PCZC0108	304152	6623828	-60	220	350	138	30	31	1	0.95
							48	50	2	1.30
							98	100	2	1.69
PCZC0109	304112	6623809	-60	220	350	102	35	38	3	3.60
Analysis by 30g Fire Assay Results compiled by using a 0.8g/t cut-off grade, no top-cut grade Maximum of 2m internal dilution										

QUARTERLY EXPLORATION UPDATE: APRIL 2012

Table 12: Lady Bountiful Extended – Significant RC drilling results

Hole_ID	AMG_E	AMG_N	Dip	Azi	RL	Depth	From (m)	To (m)	DH Width(m)	Grade g/t Au
PLBC0004	326967	6627627	-90	360	390	54	26	27	1	0.93
							39	40	1	1.15
PLBC0005	327000	6627529	-90	360	390	60	32	33	1	1.16
PLBC0006	327059	6627528			390	54	30	31	1	1.66
							35	38	3	2.64
							49	50	1	1.04
PLBC0009	327139	6627426			390	60	41	44	3	2.16
							51	53	2	2.21
PLBC0013	327516	6626021	-90	360	390	60	36	37	1	2.93
Analysis by 30g Fire Assay Results compiled by using a 0.8g/t cut-off grade, no top-cut grade Maximum of 2m internal dilution										

Table 13: Golden Eagle Prospect – Significant RC drilling results

Hole_ID	AMG_East	AMG_North	Dip	Azi	RL	Depth	From (m)	To (m)	DH Width(m)	Grade g/t Au
PPDC0231	337313	6626702	-60	270	360	120	44	45	1	2.20
							101	102	1	4.52
Analysis by 30g Fire Assay Results compiled by using a 0.8g/t cut-off grade, no top-cut grade Maximum of 2m internal dilution										